



Mano en Mano
HAND IN HAND
annual report **2018**



WHO WE ARE

MISSION

To work with farmworkers and immigrants so that they may settle and thrive in Maine.

VISION

A stronger, more inclusive Downeast Maine where the contributions of diverse communities are welcomed, access to essential services, education, and housing are ensured, and social justice and equity are embraced.

HISTORY

In the early 1990s, Milbridge experienced a rapid influx of migrant farmworkers who decided to leave the “migrant stream” and settle in Downeast Maine. In response to the needs of the Milbridge community’s newest members, Mano en Mano began to offer educational programs, basic resources, and potlucks open to all. These programs quickly expanded to include language, health, culture, education, and advocacy programming, and in 2005 Mano en Mano was officially incorporated as a non-profit.

at Mano en Mano, we are a dedicated team of..

11

year round
staff members

46

seasonal
staff members

10

board
members

120

volunteers

Our 2017-2020 Priorities

1. Support Immigration in Downeast Maine
2. Ensure access to language services and increase affordable housing
3. Increase educational and economic opportunity
4. Foster community leadership, social justice, and equity

The Road Ahead

Community Survey Project

As Mano en Mano moves into the final 2 years of our 2017-2020 strategic plan, we are working on a **Community Survey Project** to collect stories and information from the different communities we work with.

The purpose of this project is:

- to gather input from community members that will inform decisions about our future programs & services as well as feedback about the organization as a whole
- to ensure that community members are at the center of determining how Mano en Mano describes community strengths, barriers, and priorities

The community survey project consists of staff & community members working together to design, conduct, and review responses from individual surveys and focus groups.

Stay Tuned!

We expect to share updates on our Community Survey in **Spring 2020**.

Migration in Downeast Maine

Pre-Colonization

Since before the colonization of the Americas, Wabanaki families have traveled throughout what is now known as Maine for the blueberry harvest

Late 1970s

Latinx farmworkers begin working in Maine

Early 1990s

Families leave migrant stream and begin settling in Milbridge area

Today

Year round community members have settled in Milbridge area and seasonal community members come to Downeast Maine every year for blueberries, wreaths, and seafood packing.

For more than 14 years, Mano en Mano has been working with migrant farmworkers and their families in the Downeast Maine region to ensure access to essential services, increase economic and educational opportunities & foster community leadership and equity. The individuals and families we work with range from long-term residents of Downeast Maine who left the migrant stream decades ago to seasonal farmworkers who travel from across North America to work in Maine's agricultural industries. No matter where families are originally from or where they return to once the harvest is over, Mano en Mano works to ensure that every individual and family receives the support, services, and advocacy they need while living and working in Maine.



Where are our families from?

Includes families who migrate to Maine for seasonal work as well as Downeast Maine resident families' countries of origin



Through programming centered around our core values of **Access, Equity, and Education**, Mano en Mano served a total of:

2,000+ individuals in 2018

Populations Served:

1,500+
Seasonal farmworkers in Washington county

150+
Latinx families in Downeast, Maine

400+
Year round migrant youth across the state

Nuestra Voz en la Comunidad

Nuestra Voz en la Comunidad (Our Voice in the Community) is a community leadership group that brings the Latinx community of Downeast Maine together to take on leadership roles and advocate for positive systemic and community change.

Nuestra Voz members come from multiple experiences & backgrounds - from year-round families to single seasonal workers - and that means conversations around community needs are comprehensive. Mano en Mano recognizes and values the leadership of each community member in the room.

35

core leaders

150

members

97

virtual network members

"I feel like there's always someone at Mano who is there to listen."

- Nuestra Voz Member

Our Impact

Mano en Mano is committed to challenging systemic inequity and fighting for racial justice. Through programs designed to develop leadership skills and offer a platform through which community members make their voices heard, the pursuit of equity is at the core of all the work we do. Alongside our community members, we engage in local community organizing, pursue collaboration with other agencies and individuals, and advocate for statewide and national rights issues.



EQUITY

Community Advocacy Program

1,120 encounters

&

500 participants

Our **Community Advocacy Program** promotes leadership development and provides resources & support to cultivate community engagement and positive change. This program also creates cultural bridges and increases the responsibility of institutions to equitably serve these communities.

"Even though I'm here alone in Maine, I feel like I'm part of this Mano family."

- Community Member

Impact Story

In 2018, the Community Advocacy Program organized a Women's Group Meeting as a space for women to discuss concerns about mental health, parenting, and healthy relationships. During this meeting, community members decided they wanted to create a new initiative: **Aprendiendo del Otro (Learning from One Another)**.

The initiative focused on sharing food & culture with one another, giving the women the opportunity to be both teacher & student. Community members took turns teaching the group how to prepare and cook traditional food and dishes from Central America, Mexico, Colombia, and the Caribbean were shared and enjoyed.

The impact of Aprendiendo del Otro is in its recognition of the valuable and powerful knowledge our community members hold and in the creation of spaces in which women share and learn from one another, seeing themselves as the experts in the room.

"I had been feeling tired from working so much, but coming to Mano always makes me feel better."

- Community Advocacy Program Member

2018 Classes, Events & Workshops

EVENTS

- La Posada
- Father's Day Barbecue
- Mother's Day Event
- Día de las Velitas
- Making Migration Visible

CAPACITY BUILDING

- Parent Advocacy Group
- Temporary Protected Status & Deferred Action for Childhood Arrivals
- Women's Group
- Nuestra Voz

CLASSES & WORKSHOPS

- Computer literacy
- Financial literacy with follow up financial coaching appointments
- Self defense for youth & adults
- Sexual health education for youth, parents, and adults
- Water safety and testing
- Know Your Rights
- Weatherization & energy efficiency

Housing

6 Hand in Hand Apartments

represent an opportunity for families to exit the migrant stream and have year-round affordable housing in the Down East community.

In partnership with USDA Rural Development - we provide **6 units of multi-family affordable housing** for farmworkers at Hand in Hand apartments in Milbridge. While average apartment rent costs are around \$800/month in the area, Hand in Hand apartments are only \$550/month including utilities. That means a savings of \$250-\$300/month for each family.

Essential Services Breakdown

647

encounters

including access to healthcare, transportation, housing, language services, employment, financial services, medical, vision, dental, psychological, and legal supports

frequently used services

Transportation.....	30%
Education.....	37%
Communication.....	37%
Interpretation.....	58%
Health.....	60%

Many services include more than one area.

83%

of encounters occurred in a language other than English including:

Spanish & Haitian Creole

“Mano en Mano’s model provides spaces for community members to come together and **get connected to resources they need in a language they can access.**”

- Christina Ocampo
Advocacy Program Co-Director

Our Impact

Mano en Mano ensures all individuals and families have access to the essential services and resources they need to live and thrive in Maine. From fulfilling basic needs like warm winter clothes or a safe, affordable place to live to providing access to medical, legal, financial, and language services, Mano en Mano fights for all immigrants and farmworkers to gain equal access to resources and opportunity in Maine.

Resource Centers

The Welcome and Resource Centers fill a gap that migrant workers for Maine’s wreathmaking season have before their first paycheck, especially after some families go into debt to get here. These resource centers **provide access to food, winter clothing, education, health, legal advice, & other resources.**

We also hold special resource fairs during the blueberry harvest season and **served 421 meals** during the 2018 harvest

In 2018, more than **55** staff & volunteers served:

500

 people through resource centers

Blueberry Harvest School

The **Blueberry Harvest School** is a hands-on, interdisciplinary summer program through the MEP that seeks to build self-esteem, reduce summer learning loss, and promote a lifetime love of learning among students whose families migrate for the blueberry harvest in Downeast Maine.

BHS is more than a school. It's a comprehensive, inclusive program that ensures all eligible students can access a quality education and that their respective identities, cultures, and languages are valued.

The Blueberry Harvest School includes:

- A full service summer school staffed with 30+ teachers
- In-camp services for youth who can't attend school, including English classes, workshops, field trips, and more
- A team of Community Liaisons that ensure families are connected to their children's learning

Curriculum Theme 2018 - "Imagining New Stories"

This summer's theme was designed to inspire students to think critically and creatively about stories they know, while making connections to the unique perspectives, experiences & languages present in the BHS community.

a school without walls

160

students served through site-based and camp-based services

1,188

school days provided during the 4 week program

400

dinners provided for families in the blueberry harvest camps

2,651

healthy meals served to students, including daily breakfast, lunch, & snack

Maine Migrant Education Program

The Maine Migrant Education Program provides educational opportunities for migrant children in the state of Maine - assisting them to succeed in their schools, attain grade level proficiency, and meet performance standards. Mano en Mano implements the Maine Migrant Education Program across the entire state in partnership with the Maine Department of Education.

Program Highlight

Pre-School Parent Engagement Initiative

This year long initiative organized monthly parent engagement events for families with pre-school aged children. These events focused on developing different academic skills in order for students to feel more prepared for kindergarten and for parents to better support their child's learning.

Impacts

- When the initiative first started, none of the participating families had ever visited the local library.
- Through the initiative, families went on multiple visits to the library & participated in literacy activities.
- By the end of the program, **every family had received a library card.**

"All of the students & parents who participated said they felt a stronger connection and interest with books, literacy, and reading in general."

- Juana Rodriguez Vasquez
Migrant Education Services Director

Our Impact

In partnership with the Maine Migrant Education Program, we serve as advocates for migrant agricultural and fishing workers and their families to compensate for educational disruption resulting from their mobile lifestyles. We also provide instructional and support services to over 357 migrant children and youth per year from the Passamaquoddy and Mi'kmaq Nations, Central America, the United States, and within Maine.

Program Statistics

357

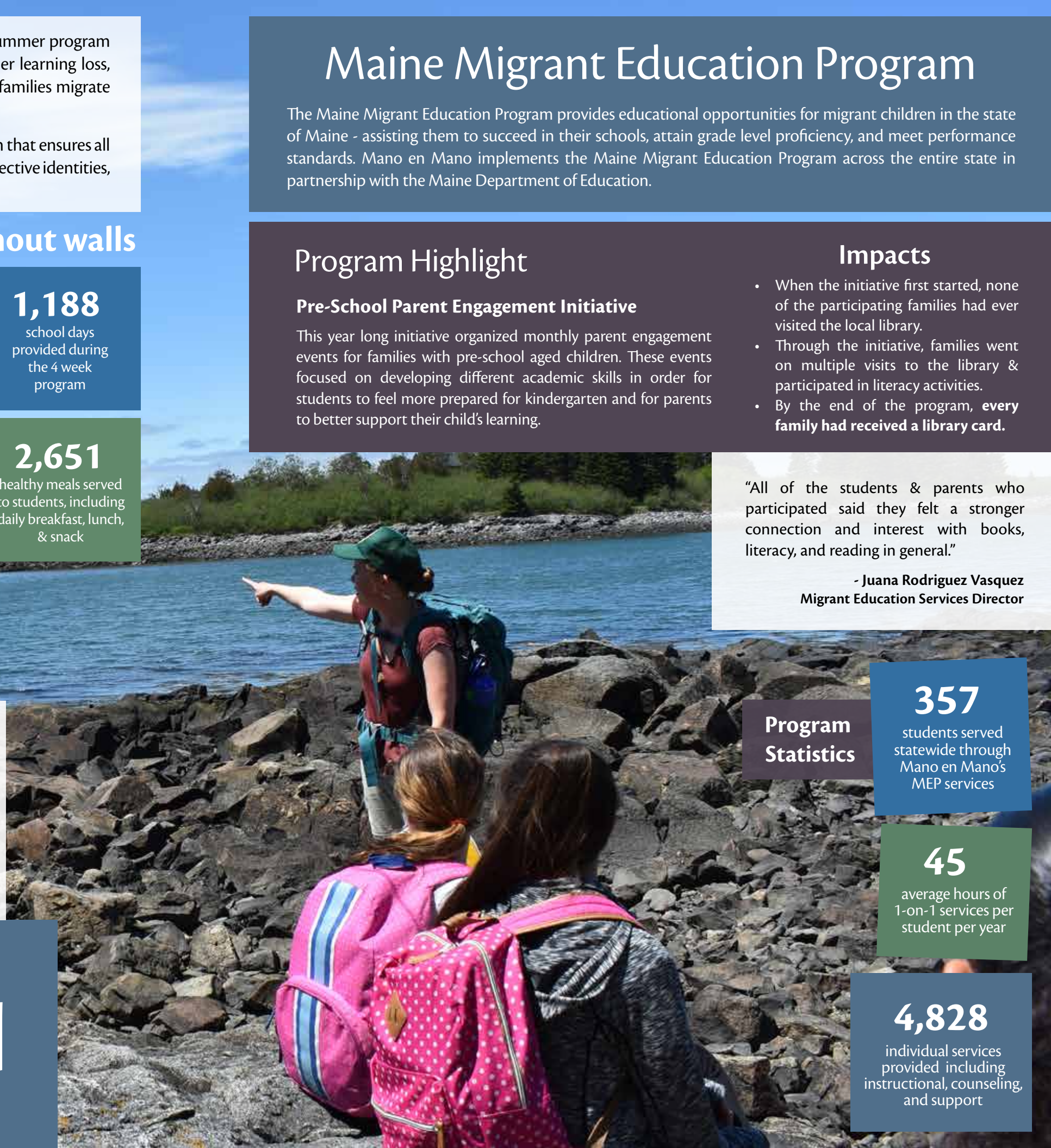
students served statewide through Mano en Mano's MEP services

45

average hours of 1-on-1 services per student per year

4,828

individual services provided including instructional, counseling, and support





Former Migrant Education Program Student Presidential Scholar at the University of Maine at Machias

Agustin Lizcano was in his first year of high school when he joined the Maine Migrant Education Program as a recently arrived student from Mexico. The Migrant Education Program began providing Agustin with the academic and language support he needed to transition successfully and Agustin continued working with the MEP over the next four years.

Agustin actively participated in all the opportunities the MEP provided: engaging in various career exploration activities, going on field trips around the area, and visiting several colleges and universities, including the University of Maine at Machias. His senior year, Agustin ended up applying to UMaine Machias. He was not only accepted for admission, but was recognized as a Presidential Scholar, an honor for students with the highest GPAs and test scores. Agustin is now studying Business at the University.

We are incredibly proud of Agustin and can't wait to see his continued accomplishments in the future.



Co-Authored Original Children's Book

Community member, Estela Albor Villafuerte, and former Mano en Mano staff member, Melanie Shelton, shared stories and experiences of Estela's childhood in the small town of El Toronjo, Michoacán, México. From these stories, the two went on to co-author a children's book, which Estela's children then illustrated. Estela wanted to share her story to educate children about the realities of migrant and immigrant families in the United States.

In February 2018, the co-authors presented their book, "Adventures, Mischief, and Dangers of the Fields: Three True Stories from my Childhood," at the 2018 National Latino Children's Literature Conference in San Antonio, Texas. They received a standing ovation from the audience. During the Blueberry Harvest School, the book was featured in the curriculum and both Melanie and Estela visited classrooms to read and share the book with students. Estela and Melanie are now working on a second book.



Visiting Author Series with Island Readers & Writers Blueberry Harvest School 2018

In collaboration with Island Readers & Writers, a Downeast Maine nonprofit organization that aims to inspire passion for reading and learning, the Blueberry Harvest School had the opportunity to welcome a very special visitor to our program.

Award-winning author Meg Medina worked with all students during the third week of the Blueberry Harvest School. Medina shared about the process of writing and publishing books, performed interactive read-alouds of her children's books, and instilled our students with the idea that everyone has stories to tell.

Grassroots Leadership Award

Environmental Health Strategy Center

This award is given to "a leader or group whose exceptional and often courageous grassroots leadership has empowered community members to create positive change for environmental health."

Partner of the Year Award

Sunrise County Economic Council

This award recognizes Mano en Mano's "commitment to further the Council's mission to create jobs and prosperity in Washington County and support to residents of the community."



HIGHLIGHTS



FINANCES

Audited financial statements and copies of IRS Form 990 are posted at www.manomaine.org/finance

CONSOLIDATED STATEMENTS OF ACTIVITIES FOR THE YEAR ENDING DECEMBER 31, 2018

REVENUE

Annual fund contributions	46,968
Grant and foundation income	272,057
Government awards	918,966
Hand in Hand Apartments revenue	85,354
Interest and other program service revenue	5,531

TOTAL REVENUE

\$1,328,876

EXPENSES

PROGRAM SERVICES

Access to essential services	111,053
Advocacy	68,332
College scholarships	18,750
Migrant Education Program	798,655
Hand in Hand Apartment expenses	103,299
Total Program Services	1,100,089

SUPPORTING SERVICES

Administration	193,245
Development and fundraising	13,492
Total Supporting Services	206,737

TOTAL EXPENSES

\$1,306,826

“Yo considero que es un evento muy bonito que reúne las familias. Sin importar de donde somos, nos une más como comunidad.”

“I think it's a very nice event that brings families together. No matter where we're from, it unites us as a community.”

BOARD OF DIRECTORS

Laura Thomas, Chair
Cobscook Community Learning Center

Rebeca Ortiz, Vice Chair
Wyman's of Maine

Scott Peasley, Treasurer
Machias Savings Bank

Adan Delgado
Nuestra Voz en la Comunidad

Beth Russet
University of Maine at Machias

Brian Dyer Stewart
BDSWorks

Clemencia Garcia
Nuestra Voz en la Comunidad

Ester A. Kempthorne
Washington Academy

Jennifer Peters
Sunrise County Economic Council

Suzen Polk-Hoffses
Milbridge Elementary School

THANK YOU

Thank you to the immigrant, indigenous, and farmworker communities that are at the center of our mission. Without their presence, ideas, and labor, there would be no Mano en Mano, and Maine would be a very different place.

Thank you to our dedicated team of year round and seasonal staff that fight for equity, education, justice, and access every single day. Our organization and programming are only as strong as the people within it. Thank you to our Board of Directors who sustain the health of our organization and whose commitment, passion, oversight, and guidance ensure that Mano en Mano lives its values always.

Lastly, our work would not be possible without the generous contributions of our donors. We are grateful for the individuals and families who support us tirelessly, the Maine businesses that demonstrate their commitment to our community, and the foundations that invest in our work.

For all who contributed their time, effort, ideas, resources, and dedication over the past year, **we thank you.**

Staff and community members participated in a cultural event at the Milbridge Elementary School in February 2018, where students and families shared different pieces representing their cultural heritage.



Join us in our fight for equity, education, and access for all farmworkers, immigrants, and their families



VOLUNTEER. We are always looking for dedicated individuals who can help carry out events, provide child care during Nuestra Voz meetings, and chaperone field trips with our Migrant Education Program. Learn more at: www.manomaine.org/volunteer

DONATE materials and clothing for our resource fairs, cooked meals for our family events or monetary contributions to keep our efforts going. Make a contribution at manomaine.networkforgood.com or write to us at info@manomaine.org

FOLLOW us on social media to stay updated with our latest news, events, and photos. Help spread the word about our work by liking and sharing our posts. Check us out at: facebook.com/manomaine

WORK with us. We have a variety of seasonal and year-round positions. Check out our openings at: mano-en-mano.breezy.hr

FOR MORE WAYS TO GET INVOLVED, EMAIL US AT INFO@MANOMAINE.ORG

Together we can create change in our state.



Mano en Mano

HAND IN HAND

Main Office
4 Maple Street
Milbridge, ME 04658

Portland Office
2 Portland Fish Pier, Suite 302
Portland, ME 04101

PHONE (207) 546-3006

EMAIL info@manomaine.org

WEB www.manomaine.org

SOCIAL facebook.com/manomaine

MAIL PO Box 573 Milbridge, ME 04658